



Limanowskiego 6/21, 30-534 Krakow



+48 515 322608, +48 606 363000



[info@gmlsystem.pl](mailto:info@gmlsystem.pl)



[www.dk.gmlsystem.eu](http://www.dk.gmlsystem.eu)

## Tilbud til stålaltaner

This overview contains proposals of steel balconies taken from our real life realizations and has been created to facilitate selection process as an addition to our offer presented in the gallery for balconies.

The solutions presented are grouped depending on the construction type:

1. balconies with tension rods,
2. balconies on columns or supports

*GML System*  
stål og glas konstruktioner



Limanowskiego 6/21, 30-534 Krakow



+48 515 322608, +48 606 363000



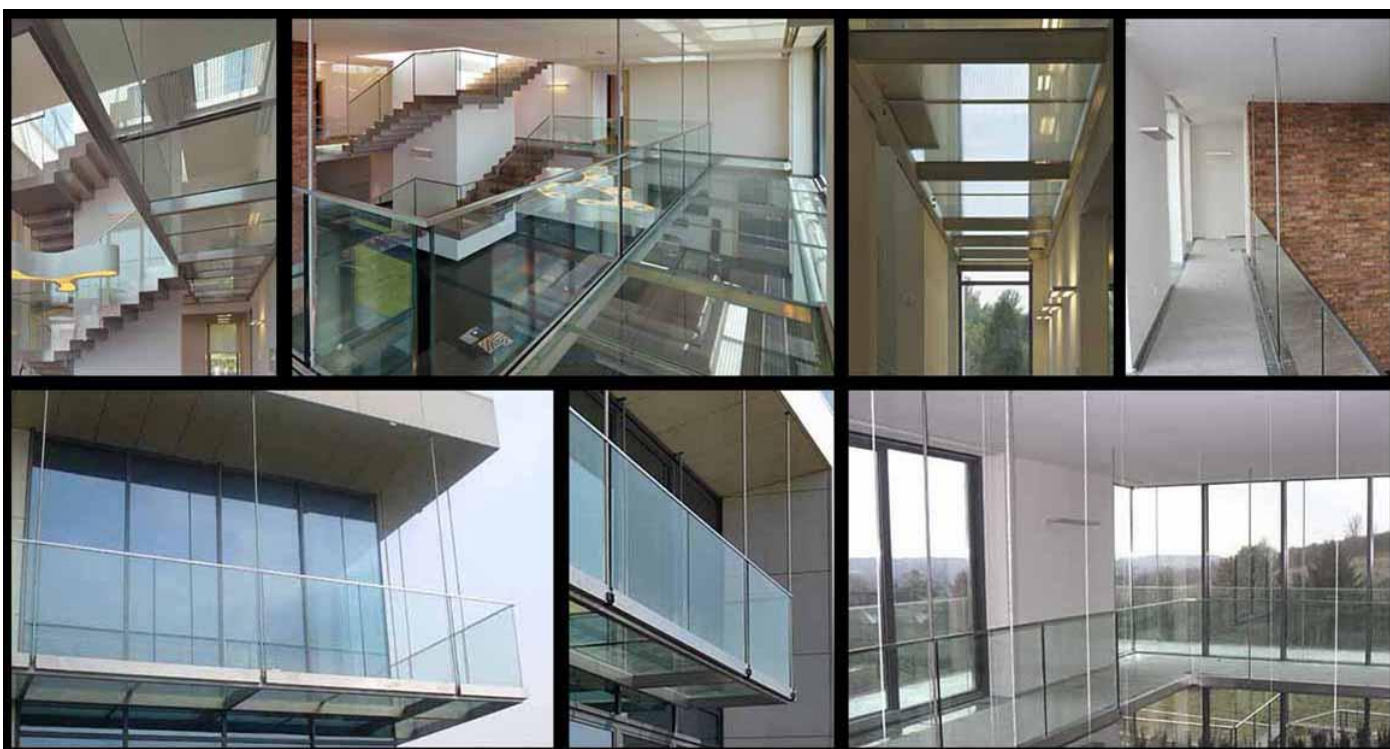
[info@gmlsystem.pl](mailto:info@gmlsystem.pl)



[www.dk.gmlsystem.eu](http://www.dk.gmlsystem.eu)

## Hængt balkoner med trækstænger

Balkon/ mezzanin med rustfri stålkonstruktion (med trækstænger), gulvglas og glasrækværk



*GML System*  
stål og glas konstruktioner



Limanowskiego 6/21, 30-534 Krakow



+48 515 322608, +48 606 363000



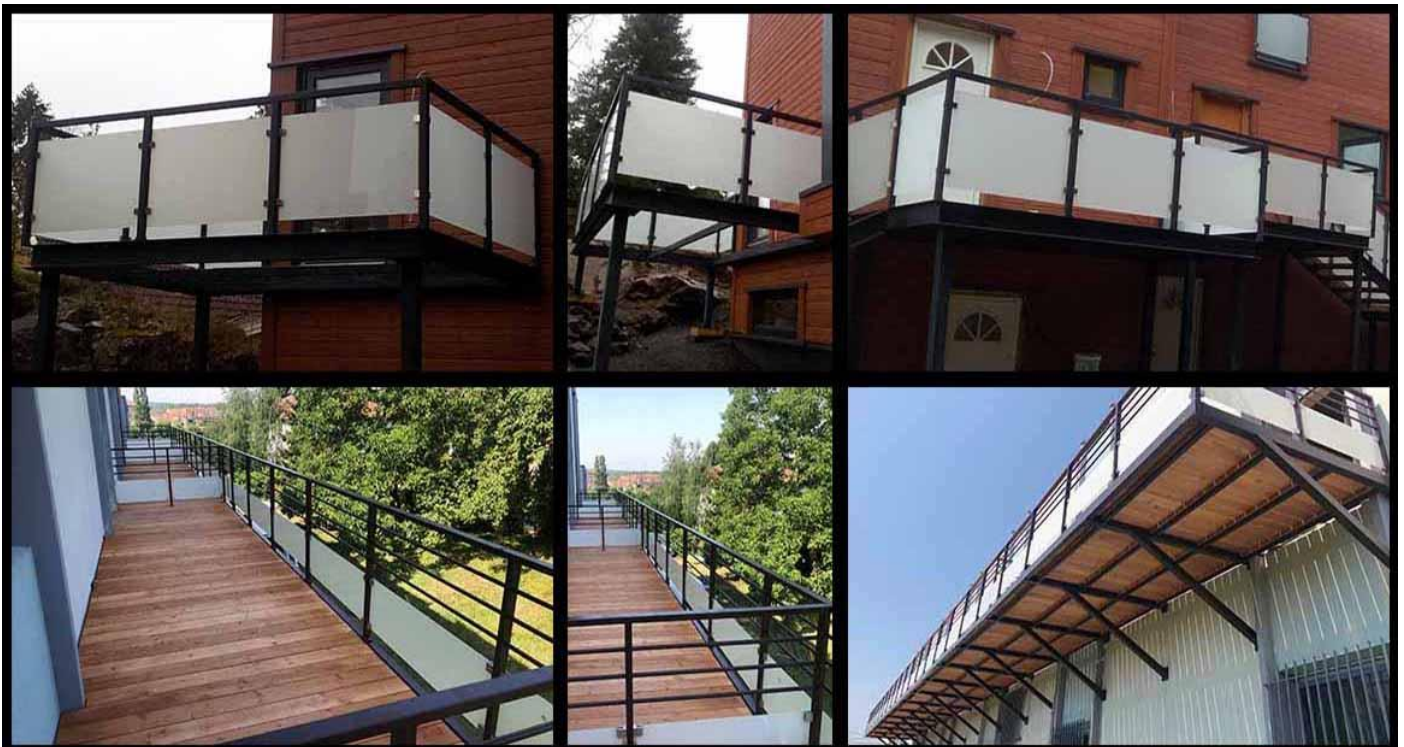
[info@gmlsystem.pl](mailto:info@gmlsystem.pl)



[www.dk.gmlsystem.eu](http://www.dk.gmlsystem.eu)

## Balkoner på søjler eller understøtninger

Balkon med galvaniserede og pulverlakerede stålstøtter (søjler eller understøtninger), gulv af træplanker og glasrækværk





Limanowskiego 6/21, 30-534 Krakow



+48 515 322608, +48 606 363000



[info@gmlsystem.pl](mailto:info@gmlsystem.pl)



[www.dk.gmlsystem.eu](http://www.dk.gmlsystem.eu)

## Our Services

We offer the following services:

- Free advise - just call if you wish to discuss an idea or potential project.
- Guidance on all aspects of product selection.  
Our web site has been designed to assist you in the selection process. It contains a catalogue of construction types in the form of photo galleries with sample solutions taken from our real life projects as well as presentation of sample projects organized in offers for different target groups: home owner, business owner and developer.
- Free of charge cost estimate based on provided by you quantity survey.
- Design - we act in all ways to ensure that your construction is designed to meet your needs precisely.
- Manufacture in our workshop.
- Delivery to your location.
- On site installation service, if required.